

BYRON

SIXTH FORM COLLEGE



Proud to be part of

Byron Sixth Form College

'With the Lord's help'

Prospectus



Bishop Chadwick
Catholic Education Trust

Welcome

On behalf of everyone at Byron Sixth Form College, we would like to extend a warm welcome to you.

Our aim has always been to provide a challenging and engaging environment in which students are equipped with the tools to enable them to achieve their potential. Our drive for excellence is evident year on year with our fantastic academic and vocational results.

As a Catholic sixth form we live by our core values of 'faith, excellence and determination' in all that we do. We are a fully inclusive sixth form, welcoming students of all faiths and of no faith to be part of our family.

Byron students are unique in that they have our own identity whilst also benefitting from being part of the wider St Bede's family. Byron is an exceptional sixth form, offering students a high level of support as they meet the demands placed on them by post-16 study. Our dedicated pastoral team are proud of the young people they work with and encourage them to have faith in themselves and strive for excellence in all that they do.

Students take their next steps from sixth form feeling determined, resilient and well prepared, with the knowledge and confidence to make informed future choices in the wider world.

We take pride in the range of academic, vocational and technical qualifications offered, allowing students to follow different combinations, resulting in greater choice at post-18.

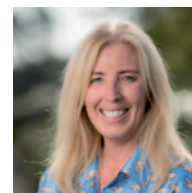
Pastoral and academic support complement each other ensuring every student has the best chance to develop as an individual and succeed. We have an extensive range of opportunities which enrich pastoral and academic care to support students on their future pathways. Our students are a credit to the sixth form and wider school and we are always pleased to see how quickly students joining our sixth form from other schools settle, make friends and become a valuable member of our family. We warmly welcome you to join us next September on your first step towards your hopes and dreams.



Mrs F. Craik
Executive Headteacher



Mr T McCourt
Chair of Governors



Mrs F Cessford
Head of School

Our Mission

At Byron Sixth Form College we are committed to inspire and develop all members of our community on a journey through faith and learning.

Our sixth form motto 'with the Lord's help', underpinned by our core values: faith, excellence and determination, is at the heart of everything we do to ensure that every student fulfils their potential.

We encourage our students to strive to achieve excellence and support their determination to overcome challenges, through tolerance, mutual respect and consideration for others.

Byron Sixth Form College Motto
Domino Adiuvente.

'With the Lords help'.



"The teachers in Byron encourage us to have faith in ourselves and others and to always work to make the world a better place."

Anthony Crich

Studying BTEC business and BTEC engineering

"Byron teachers have made me believe in myself and made me more determined to work towards my lifelong dream of being a vet"

Katie Crake

Studying A level biology, chemistry and history

"The teachers understand and encourage my drive for excellence in all aspects of my life."

Jasmine McQuade

A level Spanish, history and philosophy and ethics

Enrichment

Enrichment is an essential element to help our students to be future ready for their next stage in life. All students take part in an enrichment programme starting in year 12.

This includes a PSHE and aspirations programme utilising strong links with local and national Universities and employers. Working alongside employers provides opportunities for students to gain work experience, develop employability skills and to prepare them to take their place successfully in the wider world.

We have strong links with the University of Oxford via the OxNet programme and Kings College, Cambridge for all of our potential Oxbridge candidates. We work closely with both Durham University with their Supported Progression' programme and Newcastle University with their 'Partners' scheme, to offer experience of university and also support throughout the UCAS application process.



Meet your dedicated sixth form team



Mr I Johnson
Head of Sixth form



Miss E Precht
HE Champion



Mrs T Robinson
Assistant Headteacher

Why choose Byron Sixth Form?

1. Wide choice of quality, widely recognised courses

You are able to choose from a number of different high quality, widely recognised academic, vocational and technical qualifications. Due to the flexible approach to our curriculum, you are able to combine the qualification types to create your own personal programme of study.

2. Suitable progression

The subjects we offer at sixth form are carefully selected taking into account both subjects you have previously enjoyed studying and the range of quality qualifications that will lead to suitable routes for progression. The aim is to ensure that you have the necessary qualification for successful entry into university, further education, advanced modern apprenticeships or employment, depending on your preference.

3. Teaching staff & sixth form students

Many of our sixth formers comment on the need for individual support and individual tuition from teaching staff. You will flourish in our classes, which are smaller than other leading colleges, and you will receive plentiful personal help with your studies. Subject teachers monitor all their students on a weekly basis, ensuring that we identify concerns you may have, allowing us to respond immediately.

4. Modular assessment

At the start of Year 12 each student is allocated a target grade for every subject they study based on their previous attainment in Year 11. Ten weekly modular assessment take place, giving you and your parents/carers, the opportunity to receive regular updates on the progress you have made throughout the year.

5. Pastoral care

A strong feature of the sixth form provision is the pastoral care you will receive. Tutor groups stay together throughout the two years to allow team dynamics to develop providing a strong support network around you. The tutor/student relationship will evolve over the course of your time with us, providing you with a professional referee who has a good knowledge of your skills and strengths to enable them to support you in your career options.

6. Enrichment activities

Students will take part in an Enrichment Programme. You have a range of options, which you may choose to participate in over the course of the year. Typical types of activity are: community placement; buddy system; sport; paired reading; peer mentoring; work experience; enterprise activities; student council; charity fundraising; music. If you would like to take part in an activity that we do not currently offer support is available to develop and run a new enrichment activity.

7. Private & independent study

This gives students the opportunity to start homework or complete directed study time tasks in school using the sixth form facilities. We have a large, modern ICT suite dedicated to sixth form students.

8. Post-18 careers advice

We want all our sixth form students to be aware of the choice of opportunity your qualifications will give them. We actively encourage you to think about what careers options that you would like to explore, keeping your choices as wide as possible. As a result every student will get the chance to visit local universities, receive one to one independent career advice and have opportunities to experience real working environments.

Choosing the right course

Choosing the right course at sixth form is very important. Obviously, it is very important that you choose a programme of study which is suited to your own individual aspirations, we are aware that this is not always as easy as it seems.

Step 1

- What are your predicted GCSE grades?
- Which subjects do I really enjoy?
- Where will these subjects lead to?

Step 2

- Consider your interests (there is a lot to be said for doing something you enjoy)
- Consider your strengths and weaknesses (how do you learn best, do you perform best in exams or coursework, do you like writing essays?)
- See individual subject pages for detail on assessment and course content.

Step 3

- What qualifications do you need for career options?
- What qualifications do you need for college or university courses?
- It is vital that you research as thoroughly as possible the entry requirements for your chosen or possible career path.

Step 4

- Make sure you take up all the advice and help offered by school over the coming months.

Admissions Criteria

All students are considered on their individual merit and situation, the general admissions criteria is a guide to support your choices.

Students will be offered a place at Byron Sixth Form on the proviso that they meet the following criteria: -

At least five grades at 4+, including mathematics and English language – a minimum of a Grade 5 at GCSE in the subject they want to study (a grade 6 or higher at GCSE will be required for science and mathematics).



Sixth Form facilities



Our facilities include:

- Dedicated sixth form area within the school providing modern teaching rooms, spaces for private study and group study.
- Dedicated sixth form ICT suite with networked computers
- Common room for independent study and socialising
- Outside space with picnic benches
- Sports Hall for sporting activities
- Full equipped gymnasium
- Multi Use Game Area (MUGA)
- Dedicated catering facility with the common room
- Science laboratories
- Design and technology rooms
- Fully equipped engineering workshops
- Music rooms, recording studio and practise rooms
- Laptops for classwork and individual study

Sixth Form Bursary:

The 16 to 19 Bursary Fund helps disadvantaged pupils pay for things they need to support their education or training. Examples include clothes, books, course equipment, transport and meals. Sometimes you can get one-off payments to cover study trips or travel for university interviews. The amount you can get varies depending on your situation but it could be up to £1,200 a year. You apply through school at the start of your studies, and you will be informed of whether or not you are eligible as soon as possible.

Key Dates:

December:

Applications for sixth form open

GCSE results day:

Enrolment for sixth form

June:

GCSE Exams

Faith

Excellence

Determination

BYRON

SIXTH FORM COLLEGE

Byron Sixth Form College

Westway, Peterlee
County Durham
SR8 1DE

T: 0191 587 6220

F: 0191 518 0597

✉ enquiries@st-bedes.durham.sch.uk

🐦 @Stbedesandbyron

📘 @StBedesandByron

www.st-bedes.durham.sch.uk



Bishop Chadwick
Catholic Education Trust



Northern Saints
Teaching School Alliance

BYRON

SIXTH FORM COLLEGE

Design by urbanriver.com